

St. Laurence's Church, Ludlow



A. E. Housman Memorial



A. E. Housman Tapestry

For further information about visiting Ludlow and The Shropshire Hills contact:

Ludlow Visitor Information Centre
Tel: 01584 875053
or visit:
www.visitsouthshropshire.co.uk

2009 - A Celebration of Imagination
in the Heart of England.



The Heart of England
The West Midlands Region

Published by Shropshire Council on behalf of Shropshire & Telford Destination Management Partnership with funding from Advantage West Midlands.

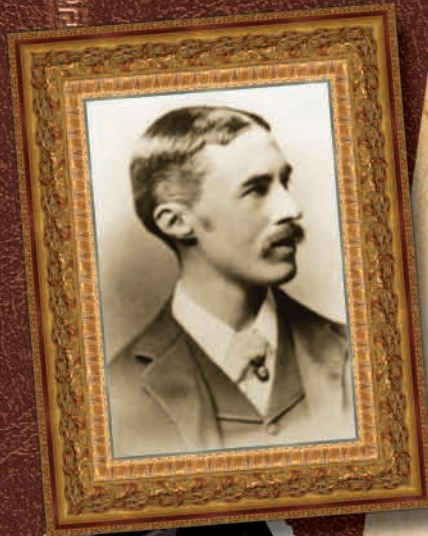


Photos: Memorial by Tim King, Tapestry by Gareth Thomas.

A. E. Housman

150th Anniversary of his Birth

1859 ~ 2009



The poet Alfred Edward Housman was born near Bromsgrove, Worcestershire 150 years ago on 26th March 1859. His cycle of poems 'A Shropshire Lad' captured the imagination of the late Victorian public and helped to create a vision of rural Shropshire with his readers. These were further popularised by being set to music by notable English composers such as Ralph Vaughan Williams and George Butterworth.

Housman's slim book of poems was a favourite amongst British soldiers serving in the First World War trenches. At last year's moving 90th anniversary of the Armistice, actor Benedict Cumberbatch ('Atonement' - filmed near Ludlow) quoted Housman's poetry from 'A Shropshire Lad' at the Cenotaph in London in the presence of the three remaining veterans of that epic conflict.

Having failed his degree Housman first worked in the Patent Office and then dedicated his life to academic studies occasionally relieved by gastronomic trips to France. He died on 30th April 1936 in Cambridge and his ashes are buried against the wall of St. Laurence's Church in Ludlow in the county that so inspired him.

Special events in Ludlow and South Shropshire in 2009

30th May - Romantic Music for Organ by Thomas Trotter, Birmingham City Organist at St. Laurence's Church, Ludlow, 4.30pm. Programme to include Elgar's Organ Sonata No. 2 and Mendelssohn's Incidental Music to a Midsummer Night's Dream. Tickets £8 on the door or in advance from Ludlow VIC. Tel: 01584 875053.

13th June - 'Shropshire Lad Day' at Acton Scott Historic Working Farm near Church Stretton. Readings of 'A Shropshire Lad'. Also on various dates throughout the season. The Farm was the location for BBC2's TV series 'Victorian Farm'. www.discovershropshire.org.uk

17th June - A Landscape of Poetry and History. This walk embraces Housman the poet, Wenlock Edge, landscape and history. Including poetry readings. Led by Christine and Mike Rayner. 7pm from Wenlock Edge Inn Car Park. Tel: 01743 255350.

20th June-5th July - The 50th Ludlow Festival includes a Housman inspired walk and celebratory concert. www.ludlowfestival.co.uk

22nd June - Ludlow Festival Walk - 'The Quietest Places Under the Sun' including Clunton, Clunbury, Clungunford and Clun. Details www.ludlowfestival.co.uk Bookings - Tel: 01584 872150.

22nd June-18th July - Exhibition of Paintings by Graham and Anne Arnold (Members of the Brotherhood of Ruralists) including new work inspired by Housman's poetry. Silk Top Hat Gallery, Quality Square, Ludlow, open Mon-Sat, 10am - 5pm. Tel: 01584 875363.

23rd June & 29th June - Summertime on Bredon, a coach tour of Bredon Hill, departs Ludlow Smithfield car park 9am. Tickets £25 from Ludlow Festival Box Office. Tel: 01584 872150. www.ludlowfestival.co.uk

2nd July - Housman Celebratory Concert by the Schubert Ensemble and James Gilchrist, tenor including Vaughan Williams 'On Wenlock Edge' and



Gurney's 'Ludlow and Teme' and Elgar's Piano Quintet at St. Laurence's Church 7.30pm (Part of Ludlow Festival) Tel: 01584 872150. Email: tickets@ludlowfestival.co.uk

5th July - A Walk in Housman Country. Experienced walkers David and Marjorie Cashmore will lead a walk in the Clun area to the top of Bury Ditches. Lunch in Clun, followed by an afternoon following the Clun Heritage Trail. Meet 10am Clun Bridge car park. www.housman-society.co.uk

11th September-31st December - A. E. Housman - the Ludlow Connection. An exhibition of prints and paintings from Ludlow Museum collections, plus material from the Housman Society. A programme of events accompanies the exhibition. At Ludlow Museum Resource Centre. Free. Tel: 01584 813665. Check for Christmas closures.

Cycle through the landscape of "The Shropshire Lad"

Housman inspired routes. Bespoke easy and moderate cycle tours including accommodation, bikes, luggage transfers and routes. Tel: 01568 770755. www.wheelywonderfulcycling.co.uk Email: info@wheelywonderfulcycling.co.uk

More information about Ludlow and The Shropshire Hills

Ludlow Visitor Information Centre. Tel: 01584 875053.

www.visitsouthshropshire.co.uk

Copies of several editions of 'A Shropshire Lad' on sale.

New edition of 'A Shropshire Lad'

Merlin Unwin Publisher in Ludlow has published a new pictorial edition of 'A Shropshire Lad' by A. E. Housman with photographs by renowned Ludlow photographer Gareth Thomas. 128 pages, hardback, £20.

